



LINK Health and Wellbeing Forum



**Report of the first
forum held on
22 November 2011**

Contents

	Page
Introduction and background	2
Health and wellbeing board	2
LINK's health and wellbeing forum	2
What you said	3
The Law Commission 'Caring for our future'	4
What happens now?	5
Evaluation	5
Appendix 1: LINK health and wellbeing proposed community involvement structure	
Appendix 2: Presentation by Anne Graney, health and Wellbeing Coordinator	
Appendix 3: Presentation by John Robson and Claire Easton, LINK Board	

Introduction and background

In line with the government's white paper, 'Equity and Excellence: Liberating the NHS' North Tyneside Council has created a shadow health and wellbeing board prior to the Health and Social Care Bill coming into statute in early 2012 and formation of a permanent board.

The health and wellbeing board

The multi-disciplinary board aims are to:

- Assess the needs of the population
- Formulate a strategy for health and wellbeing which commissioners will need to implement
- Promote integrated commissioning and integrated service provision
- Provide advice to NHS Commissioning Board in authorising and assuring of Clinical Commissioning Groups

Anne Graney is the local health and wellbeing board co-ordinator.

North Tyneside LINK is represented on the board. John Robson is vice-chair; June Davies, a board member and Claire Easton, deputising in June's absence.

North Tyneside LINK's health and wellbeing forum

In response to the creation of the board and the reconfiguration of the old partnership boards, North Tyneside LINK plans to set up a health and wellbeing forum to provide two-way conversations between LINK's reps on the board and LINK members.

North Tyneside LINK is also to support user and care representation by supporting existing topic based forums of users and carers of health and social care services or by the creation of new ones (see appendix 1: health and wellbeing board community involvement structure). It is envisaged that these will then feed into the health and wellbeing forum which links to the larger health and wellbeing board.

The inaugural meeting of the health and wellbeing forum was on 22 November 2011 with over 45 LINK members, councillors and council staff in attendance.

Anne Graney, health and wellbeing co-ordinator, presented an overview on the health and wellbeing board – the new expectations of the board and future plans and development. For a copy of Anne's presentation see appendix 2.

John Robson and Claire Easton then spoke on the aims of LINK's health and wellbeing forum and how the issues raised by LINK members replicated many of the priorities being looked at by the health and well being board. For a copy of their presentation see appendix 3.

What you said

The audience then split into two groups to look at whether members' felt that LINK's health and wellbeing forum was a good way forward and at what issues it should be prioritising:

Members felt that forum needed to have 'teeth' to take on authorities. Although the forum will be about talking and sharing it needs to be able to go to authorities on behalf of members, thus there needs to be an efficient way of engaging. If members want to engage with voluntary groups then there must be mechanisms to allow them to either contact them outside meetings or by arranging meetings on specific issues or through contacting LINK.

The forum was perceived as a good opportunity to feed into the health and wellbeing board and discuss issues and share information.

Some members had reservations about the health and wellbeing board being too large and not all groups were represented, for example older people and that prevention did not appear to be a priority.

The meeting broke for refreshments and then reconvened to look at new proposals around the funding of adult social care.

The Law Commission, 'Caring for our future'

Adult social care funding needs to be fairer in the way it is paid. The government is seeking the public's views on three suggested ways.

Concept 1

'People who need care before the age of 40 should not have to pay anything during their life'

Members wanted to know how the age of 40 had been arrived at and how an age can be set. This led to discussions about age limits within the benefits system (for example Disability Living Allowance and Carers Allowance ending at 65). Members were concerned about people being 'forced into work' even if they had a long term condition.

Concept 2 and 3

'No one should have to pay more than £35,000 in total'

'Anyone with savings less than £100,000 should not have to pay.'

Attendees were unclear whether this included assets but the principle was sound but the amounts were not right. Members questioned whether these amounts would be index-linked. It was questioned whether having financial limits would encourage people not to save for the future.

What happens now?

LINK's health and wellbeing forum

North Tyneside LINK will hold the health and wellbeing forum quarterly in line with the health and wellbeing board to allow two-way dialogue between LINK members and the board.

LINK will support local groups and individuals have a greater voice in health and social care.

Comments made in relation the 'Caring for our Future' will be fed back as part of the Law Commission's public consultation.

Evaluation

45 individual and organisation LINK members attended alongside local councillors and council staff. The majority of people who returned their evaluation sheets said the meeting 'fully' or 'largely' achieved its aims by allowing LINK members and members of the public to have their say on what is happening locally in health and social care and to learn about the work of the health and wellbeing board.

Members appreciated the opportunities to be informed and to input into local and national plans.

'Useful discussions with other people'

'Bringing together people from various areas was useful'

'It brought to my attention what is happening and highlighting the work of LINK.'

Unfortunately, many members felt there were poor acoustics in the hall and that it would have been more beneficial to have the breakout sessions in separate rooms. LINK accepts this and will endeavour to achieve this for future meetings.

The LINK team would like to thank all those who attended and contributed to the discussions.

If you would like to find out more about LINK's health and wellbeing forum, North Tyneside health and wellbeing board or Caring for our future consultation please contact North Tyneside LINK on 0191 643 2624 or email link@voda.org.uk



North Tyneside Local Involvement Network

The Shiremoor Centre, Earsdon Road

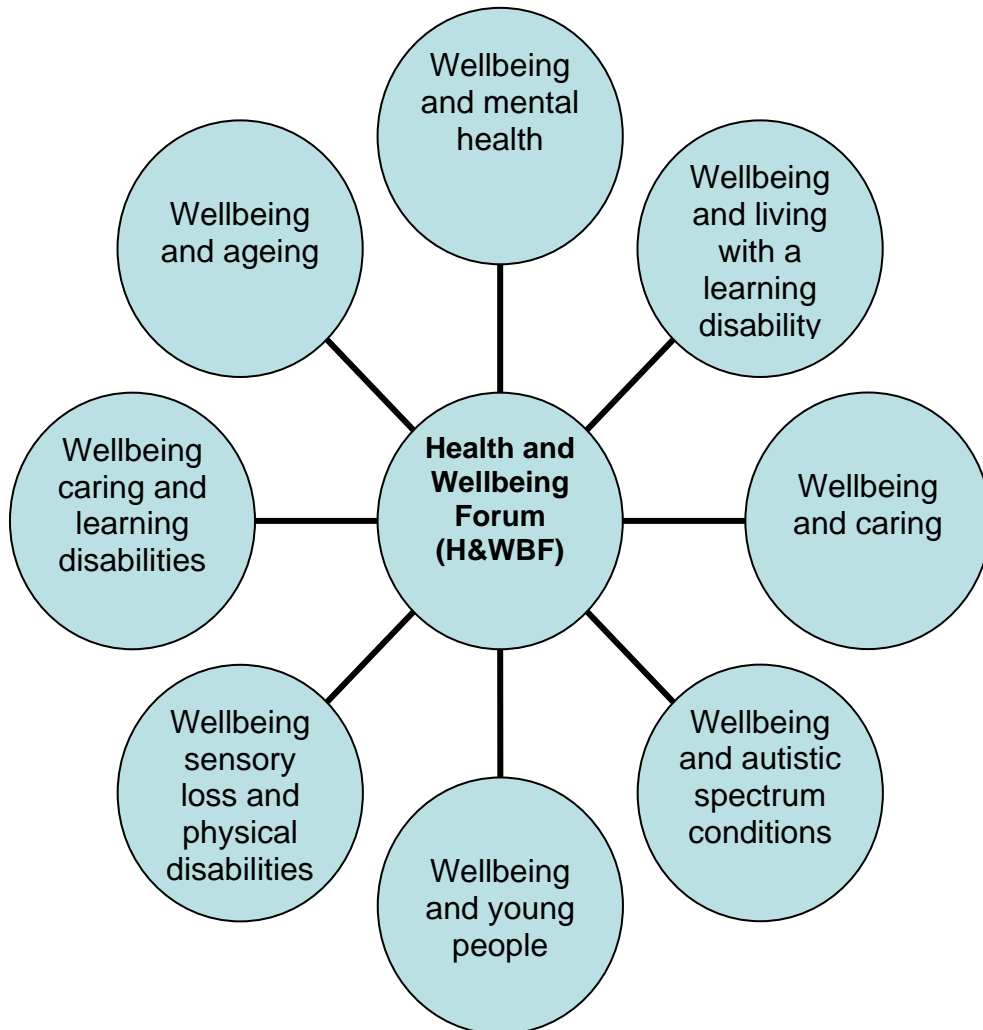
Shiremoor NE27 0HJ

Telephone: 0191 643 2623

Email: link@voda.org.uk

www.linknorthtyneside.org.uk

North Tyneside LINK proposed Health and Wellbeing community involvement structure November 2011



Health and Wellbeing Forum – links to Health and Wellbeing Board and strategy through LINK representatives, JSNA and commissioning executive.

1. Wellbeing and mental health
2. Wellbeing and living with a learning disability
3. Wellbeing and caring
4. Wellbeing and autistic spectrum conditions
5. Wellbeing and young people
6. Wellbeing sensory loss and physical disabilities
7. Wellbeing caring and learning disabilities
8. Wellbeing and ageing

All specific interest forums/groups will link to the six commissioning groups on their chosen issues to be consulted upon.

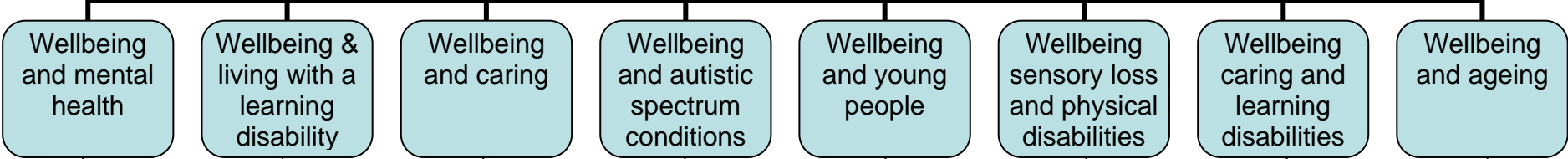
Commissioners and other visitors will be invited to the forums to ensure that the perspective and experience of people using services and their carers and supporters inform their thinking and planning.

- H&WBF will run four times a year and review themes from other forums, the Health & Wellbeing board activity, member's issues and regional/national consultations
- Other forums will run bi-monthly and set their own agendas

How will the forums reach out and connect with the community and link with commissioners and service providers?

Health and Wellbeing Board

Health & Wellbeing Forum



Wellbeing and mental health

Jane Noble - Service user group
Carers Centre MHINTy Inc. mental health matters
Independent Advocacy Rethink NTDF
Margaret Rd Richmond fellowship
PROPS Arts Studio N2L

Wellbeing & living with a learning disability

Skills for people
Quality checkers
Independent Advocacy Mencap
New prospects SPRINT
Margaret Rd Edward Lloyd Trust

Wellbeing and caring

Carers Centre Age UK
Alzheimer's Society PROPS

Wellbeing and autistic spectrum conditions

North Tyneside College
Carers Centre Autism NE

Wellbeing and young people

Depaul Phoenix YMCA
Barnardos CHAT
Carers centre All together better
NTDF (POP) Connexions

Wellbeing sensory loss and physical disabilities

Tynemouth Welfare Blind Society
Ho-Ho Coalition for the disabled
NTDF Fibromyalgia group
Stroke group Parkinson's society

Wellbeing caring and learning disabilities

LDF Carers centre Carers group
All together better

Wellbeing and ageing

Age Uk OPF
Arthritis care Stroke North
OPEN OPVSF inc. Hand in hand
Live at home St John's Alzheimer's Society

Commissioning areas

Health improvement	Long term conditions	Alternatives to hospital	Integrated disabilities	Mental health and recovery	Early intervention
--------------------	----------------------	--------------------------	-------------------------	----------------------------	--------------------

Health and Well Being

Anne Graney
Health and Well Being Co-ordinator

November 2011

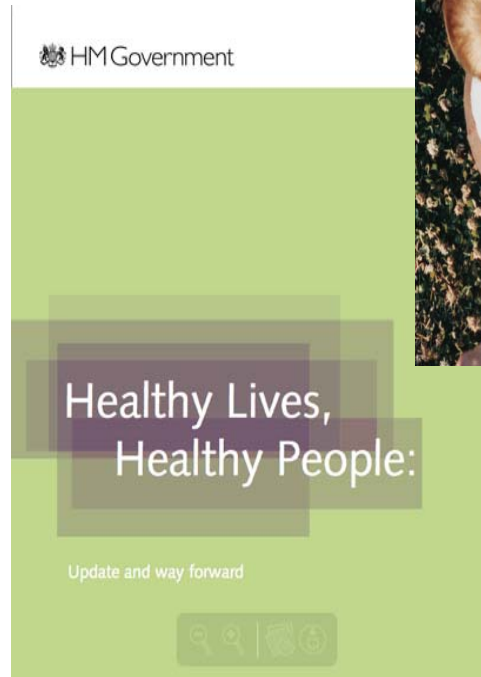


Overview

- Background
- Health and Social Care Bill
- New responsibilities and expectations
- Next Steps for North Tyneside



Key documents



Fair Society, Healthy Lives (2010)

Marmot Review - Six Inequality Recommendations:

A: Give every child the best start in life

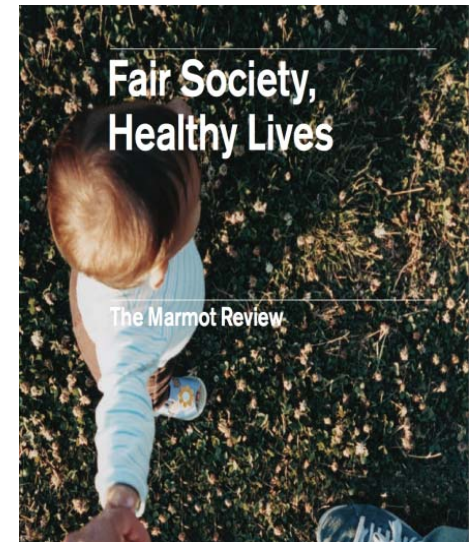
B: Enable all children, young people and adults to maximise their capabilities and have control over their lives

C: Create fair employment and good work for all

D: Ensure a healthy standard of living for all

E: Create and develop healthy and sustainable places and communities

F: Strengthen the role and impact of ill-health prevention



Healthy Lives, Healthy People (2010)

- Health and Well Being to become everyone's business
- Focus on health improvement, across the life course
- Aim to close the gap in health inequalities
- Ambitious Reform of the Public Health System
- New responsibilities for Local Authorities



Local Authorities

- Focus on wider determinants of Health and Well Being i.e. Employment, Housing, Education, Leisure etc
- Greater opportunity for community engagement
- Development of integrated solutions with partners
- Public health budget
- Director of Public Health will lead this work as principal adviser on health to the Local Authority



Health and Well Being Board

1. Commissioners (Primary Care, GPs, LA)
2. Providers (3 FT and 1 Local Authority Chief Exec.)
3. Elected Mayor (Chair) and 4 local Councillors
4. 3 LINK representatives
5. Young representatives (Young Mayor, Young Cabinet Member)
6. Director of Public Health
7. Health and Well Being Co-ordinator
8. Administrator



Board Key Responsibilities

- Assess the needs of the population
- Formulate a Strategy for Health Well Being which commissioners will need to implement
- Promote integrated commissioning, integrated service provision
- Provide advice to NHS Commissioning Board in authorising and assuring of CCGs



Next Steps

- Health and Well Being Board 'time out' – Autumn
- Develop the Shadow Health and Well Being Board
- Agree key work priorities for 2012/13
- Process for developing the vision and strategy
- Develop HWB principles and purpose
- Define health and well being priorities
- Process for community engagement

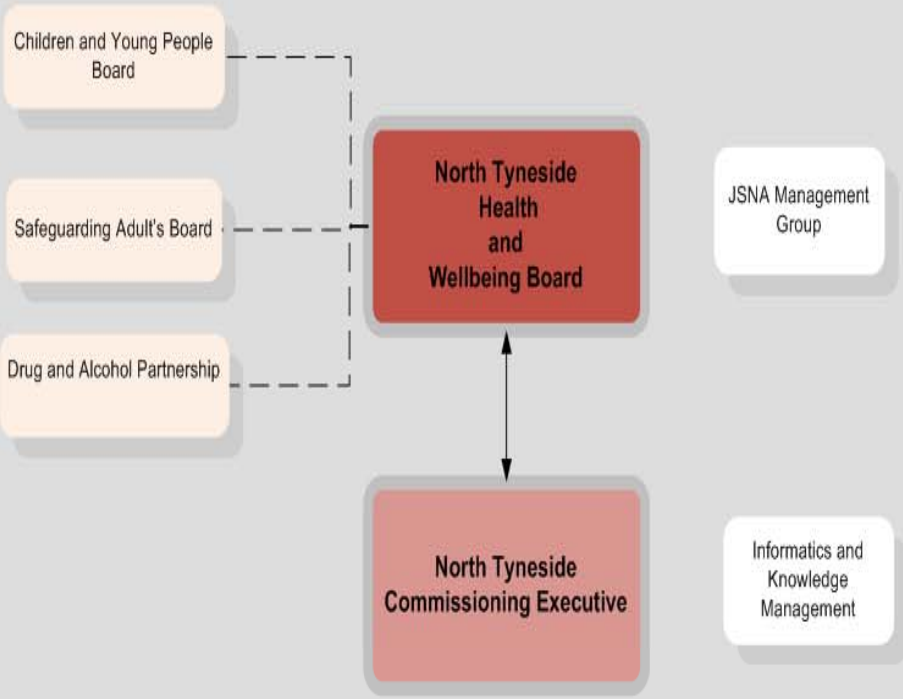


Tell us what you think

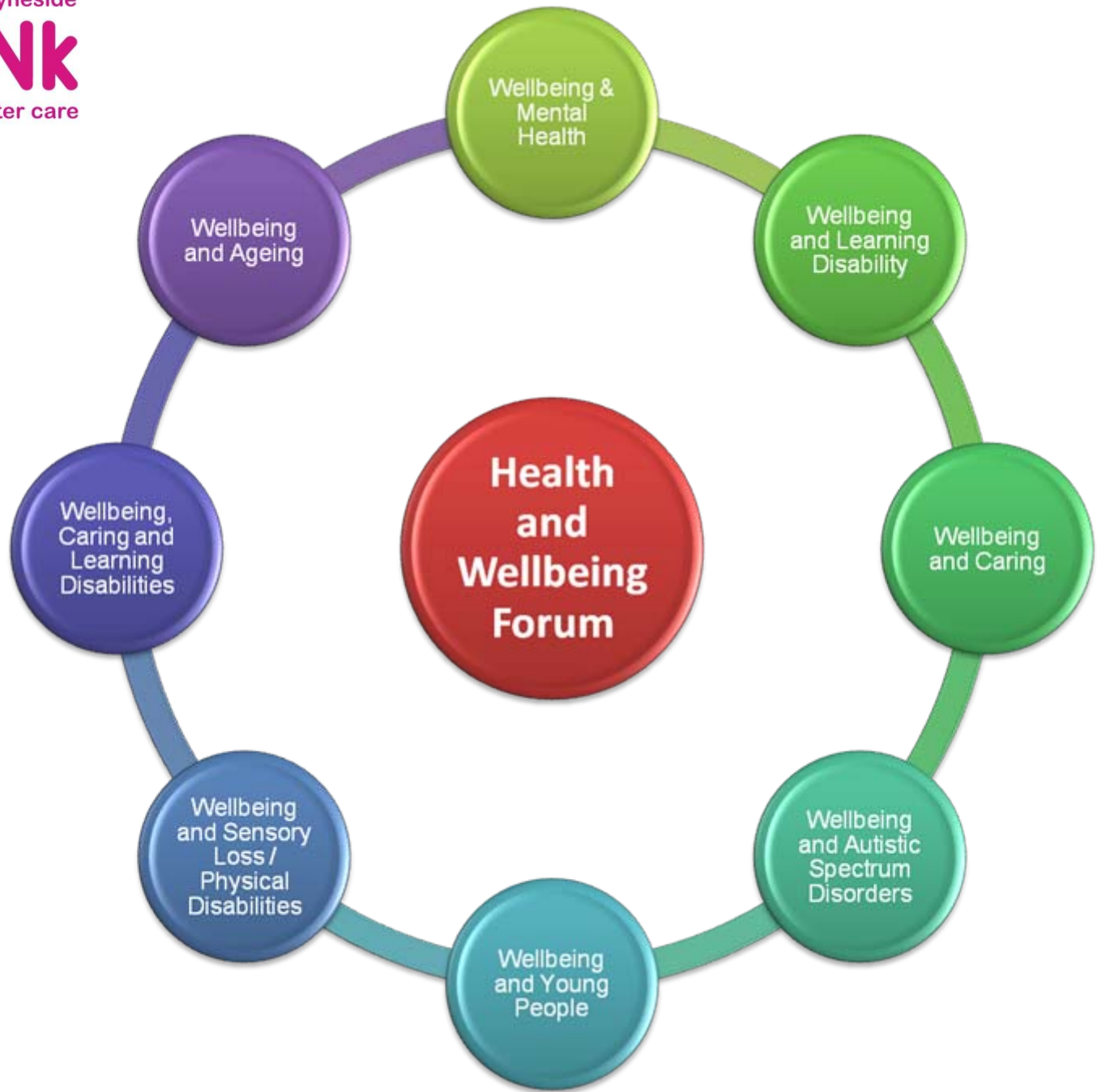
The aim of the forum:

Share your views and ideas with your LINK reps on North Tyneside's Health and Wellbeing Board

Help us speak up for better health and social care in North Tyneside



Health Improvement and Prevention Partnership Board	Long Term Condition's Partnership Board	Alternatives to Hospital	Learning Disability Partnership Board	Mental Health Partnership Board
Rotational Public Health Projects Advice and Information Voluntary Sector Contracts (shared) Transfer of Public Health to Council	Transforming Community Services Older People's Mental Health Stroke COPD Diabetes Falls CHC Supporting People Programme Grant Services Carers	ECC and Base Site Development Reablement Community Based Urgent Care Service Urgent care dashboard Shared Patient Record End of Life Care Driving up Quality in Care Homes Equipment and Adaptations Telecare and Telehealth	Valuing People Autism Complex case management Out of borough placements Transition Access to Primary Care Outcomes from Hospital Care Inclusion and community safety Supporting People Programme Grant Services Carers	Prevention Recovery and Social inclusion Improve Care Pathways Interface Working with CAMHS, Older Persons Services and Learning Disability Services New Horizons MHA Admissions and monitoring MHA management S117 Supporting People Programme Grant Services Carers



Tell us what you think

Health and Wellbeing Boards' priorities

- Stroke
- Falls
- Reablement
- End of life care
- Learning disabilities
- Dementia
- Alcohol and smoking
- Childhood obesity
- Teenage pregnancy
- Safeguarding young people

LINK projects and members priorities

- Home care
- Reablement
- End of life care
- Prevention and early diagnosis
- Personalisation
- Care of vulnerable adults
- Mental wellbeing
- Learning disabilities
- Adults with autistic spectrum conditions
- Dementia
- Carers
- Young people's health

Tell us what you think

- comments
- issues
- questions